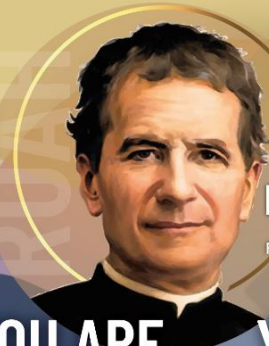


## CATHOLIC SOCIAL TEACHING

We pursue social **justice**, work for **peace** and strive for **reconciliation** when things go wrong. These are encouraged in all our work and within our **relationships** as we aim for a better world.



**DON BOSCO**  
1815-1888  
FATHER AND FRIEND OF YOUTH



## CATHOLIC

### SOCIAL TEACHING

**Dignity in work:** We are co-creators with God and we all contribute to the world. We understand there is importance in what we do and that our work is productive, creative and positive for all.



**Common Good:** We are interdependent, inclusive in our inspired pursuit of working for the good of all and in the **service** of others.



**A preferential option for the poor:** We show concern and a deep sense of love for those who are marginalised, excluded and vulnerable within our society. We show these people are our priority through outreach and action.



**All Saints**  
Catholic High School



**Human dignity:** We are all created in the image and likeness of God and understand the deep spiritual connection between all people. We recognise that everyone is of value, has worth and must be respected.



**Community and Participation:** We are a community in which we all benefit from our solidarity and the unconditional support we offer one another.



**Stewardship:** We care for creation and respect our environment. We take responsibility for our actions and live sustainably with a focus on future generations.

**YOU ARE  
YOUNG**

**YOU ARE  
PRECIOUS**

**YOU ARE  
LOVED**

**Respect  
Understanding  
Affection  
Humour**

**Understanding  
Affection  
Humour  
Respect**

# A warm welcome to All Saints

# Our Mission

We are a Catholic community whose mission is to fully prepare our students for the wider world and to send them into it equipped for life and for the service of others.

We come together from diverse backgrounds, united by Christ, by the highest aspirations and by a thirst for excellence to instil in our students a respect for themselves, for others and for their environment.

We take our inspiration from Jesus' commandment to **"love one another"**.



# Our Values

Values Statement All Saints is a welcoming faith community living by the value of :

- **Respect** for ourselves, others and our environment.
- **Understanding**, accepting and celebrating the uniqueness and diversity of our All Saints' family.
- **Affection** for all members of our school and wider community in every situation.
- **Humour** in our interactions with each other, showing loving kindness to all.



# Closing the Learning Gap

- Close collaboration between All Saints and Year 6 teachers.
- Understanding the KS2 curriculum and what to revisit in Year 7.
- Primary trained colleagues work with students who benefit from support in bridging the gap between primary and secondary school.



# KS3 Curriculum



- Well being first; diagnostic testing second
- Wide programme of intervention with a focus on reading and wider literacy skills
- A co-ordinated approach to skills in every subject
- Reading, vocab and oracy focus
- Skills Descriptors



# What Will Your Children Learn?

How to become a detective

Creation and Covenant  
Promise and Prophecy



Explosive Earth



Spanish speaking  
world



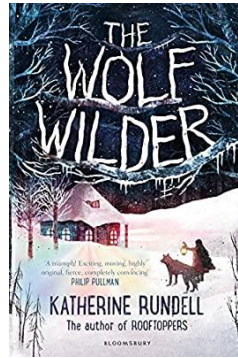
Bleep test



Non linear  
sequences

Musical elements

Wolf Wilder



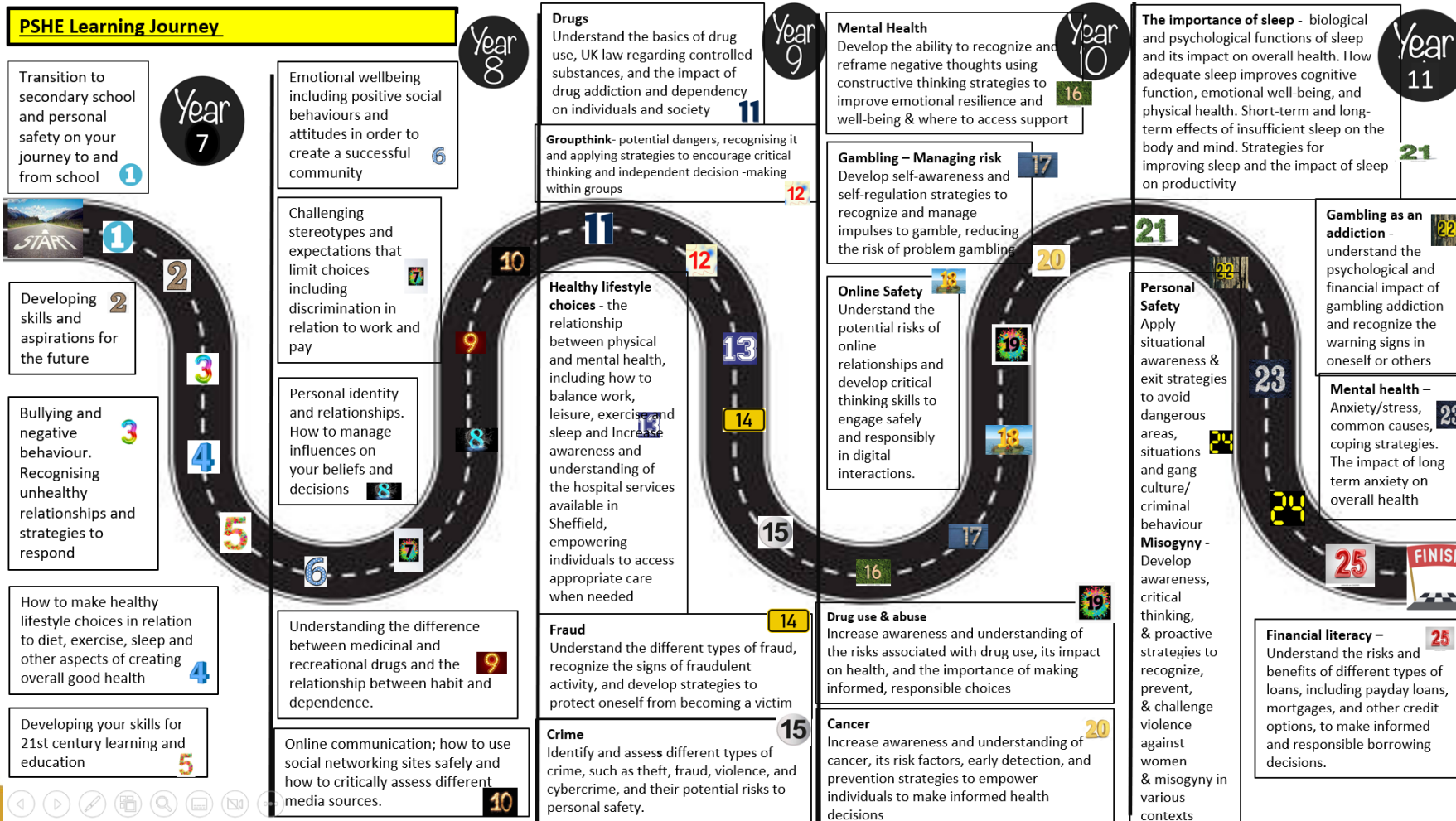
Where in the world?



Sheffield artists

# Personal Development

## PSHE Learning Journey



# Supporting Parents

## Curriculum / Learning

**Examples:** Homework set, level of challenge, information about learning needs, assessments and revision, classroom-based issues

Contact the Subject Teacher via **Class Charts** messaging as they know your child best

If this has not resolved your question...

Contact the Subject Leader via **email** (see page 3-4)

If this has not resolved your question...

Contact the Senior Leadership Link for the department via **email** (see page 3-4)

If this has not resolved your question...

**For KS3/KS4:** contact the Deputy Headteacher for Quality of Education via **email**.

**For KS5:** contact the Director of Post 16 via **email**. (see page 3-4)

If this has not resolved your question...

Email the Headteacher's PA for communication with the Headteacher

## SEND

**Examples:** Access arrangements, review meetings, updated student information

Contact SEND administrator:  
[Lhorter@allsaints.sheffield.sch.uk](mailto:Lhorter@allsaints.sheffield.sch.uk)

## Safeguarding

For any non urgent safeguarding enquiries, please email:  
[SafeguardingGroup@allsaints.sheffield.sch.uk](mailto:SafeguardingGroup@allsaints.sheffield.sch.uk)

For anonymous reporting of issues, the Whisper reporting tool is available on the school website

## Inclusion (Pastoral)

**Examples:** Friendship issues, uniform, issues at social time, family circumstances, information about behaviour issues or concerns

Contact the Form Tutor via **Class Charts** messaging as they know your child best

If this has not resolved your question...

Contact the Year Leader via **Class Charts** (see page 3-4)

If this has not resolved your question...

Contact the relevant Senior Leadership Link via **email** (see page 3-4)

If this has not resolved your question...

**For KS3 and KS4:** contact the Deputy Headteacher for Inclusion via **email**.

**For KS5:** contact the Director of Post 16 via **email**. (see page 3-4)



**ClassCharts**  
*for Parents*



**Sheffield Parent Hub**

# Transition



- **April/May we visited pupils in schools**
- **Contacting all schools and class teachers**
  - Friendship groups
  - Meetings/phone calls with class teachers to discuss pupils
  - All Saints SENDCO meetings with schools
  - Pastoral Support visits to several schools
- **Catholic Cup**  
**Friday 26th June**

# Transition



## Transition Days at All Saints

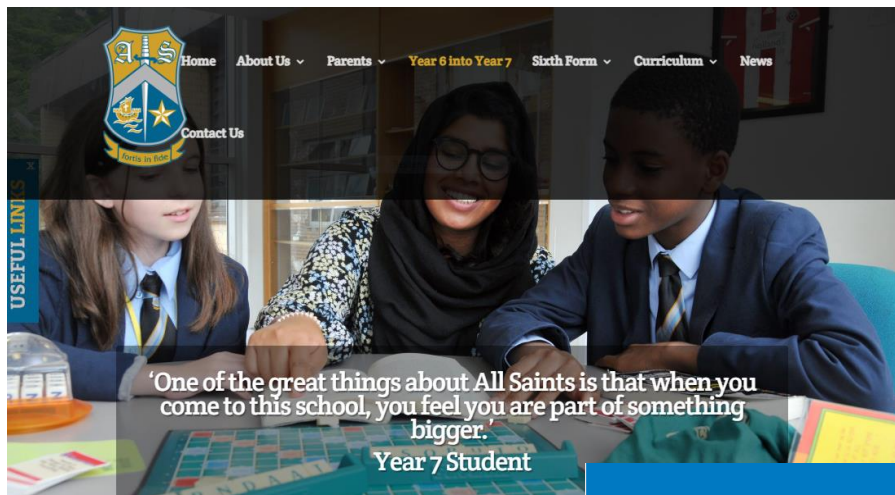
Non feeder pupils Tuesday 30th June

All pupils Wednesday 1st and Thursday 2nd July

8:30am – 2:50pm

- Pupils meet form tutors
- Pupils meet their new form group
- Pupils will have a range of lessons
- Pupils will meet several members of staff

# All important information can be found on the Y6 into Y7 page of our school website.



If you have any questions regarding transition please contact the Transition Team using the emails below:

[c.murasa@allsaints.sheffield.sch.uk](mailto:c.murasa@allsaints.sheffield.sch.uk)

[r.hartley@allsaints.sheffield.sch.uk](mailto:r.hartley@allsaints.sheffield.sch.uk)

If you have questions regarding the admissions process please contact Mrs Brady using the following email:

[n.brady@allsaints.sheffield.sch.uk](mailto:n.brady@allsaints.sheffield.sch.uk)

Please click [HERE](#) for the school Policies

# **Important Dates for September**

The first day of school for Y7

**Wednesday 2nd September**

Our Parent Information Evening

**Wednesday 23rd September 3:30-5pm**



# The All Saints Way

We rejoice and take **pride** in being members of the All Saints' family. Every one of us has **aspiration** for **excellence** and recognises our individual and collective **responsibility** in showing **respect** for ourselves, others and our environment.

This is the All Saints Way.



# The All Saints Way

## Pride

Pride in yourself



Students take **pride** in their **uniform** and their **equipment**



## Responsibility

Responsibility for your learning



Students take **responsibility** for their **punctuality** to school and **presentation** in lessons



## Respect

Respect for self and others



Students show **respect** in interactions with staff and students in **social areas** and are ambassadors of All Saints within the **wider community**



# Rewards

## Rewards and Recognition at All Saints

We rejoice and take pride in being members of the All Saints' family. Every one of us has aspiration for excellence and recognises our individual and collective responsibility in showing respect for ourselves, others and our environment. This is the All Saints Way.

When a student's behaviour meets or goes above and beyond the expected behaviour standard, staff will recognise it with positive recognition and reward. This provides an opportunity for all staff to reinforce our relational approach and principles of RUAH.

Our approach to rewards and recognition follows a tiered approach with the opportunity for weekly resets and fresh starts for all students:



Tier 1 rewards	
Verbal praise	Staff provide immediate positive feedback for demonstrating the All Saints Way in lessons and around the school
All Saints Way stickers	Given to students who exemplify the All Saints Way in lessons
Praise messages/ calls	Staff will use Class Charts messaging (or call home) with something to praise from lessons
Shout outs	Student and staff nominations for All Saints Way or RUAH from the previous week played on Monday over the announcements system

Tier 2 rewards	
All Saints Way slips	Recognising students who go above and beyond in their learning or show exceptional effort. Can be cashed in for a fast pass at lunchtime or at the reward shop
Always the All Saints Way message home	No negatives this week recognition messages to parents/carers each week via Class Charts
RUAH Postcard	Weekly postcard nominated by staff

Tier 3 rewards	
All Saints Way postcard	Staff nominate exceptional examples of the All Saints Way to Leadership via a postcard which leads to a Year Leader and Senior Leadership Team recognition meetings
Always the All Saints Way award	Half termly certificate with increased rewards for accruing this each half term
Termly rewards events	Recognise student progress, participation, and achievement including no negatives – nominated by class teachers
Pop up rewards	Pop up rewards given for exceptional behaviour or effort, both in and out of school

Tier 4 rewards	
All Saints Way pin badges	Awarded for the 5 characteristics of the All Saints Way: Aspiration, Excellent, Pride, Respect and Responsibility
Annual celebration of academic achievement	A formal event to celebrate academic achievements
Annual celebration of sports achievement	A formal event to celebrate sporting achievements

### House system

Each student is part of a house which is associated with a Saint and a virtue: Belief, Courage, Endeavour, Fortitude and Perseverance. The House system encourages healthy competition and a sense of community including the support of local charities through fundraising events.

House points are awarded for positive contributions to our school community such as attending extra-curricular clubs, volunteering, representing the school, and participation in House competitions. The House shield is awarded to the winning House at the end of academic year.

Rewarding behaviours that goes above and beyond

Instant rewards

Tiered approach

Weekly resets and fresh starts



# Expectations

Class Charts Parent App is the main way you can support your child in school as parents/carers



Live information on attendance, rewards, behaviour profile and access to independent learning tasks.

Expectations in school

Representing our school community

Punctuality


Uniform

Mobile phones

Social media



# Special Educational Needs

- Meetings with Primary School SENCOs
  - Paperwork will be transferred in September
  - Autumn term to settle
  - Support staff
- 

# At All Saints

**Our School Prayer:**

**Lord Jesus Christ,**

**we rejoice that we are part of this School.**

**Help us to realise our calling, our vocation,  
our service of you.**

**Wherever we are, wherever we go,**

**may we be a constant sign of the joy of the resurrection, a witness to  
your Gospel, a bringer of Peace.**

**May we always be guided and helped by the intercession of all the  
Saints of heaven.**

**May we, as they, give our lives in your service  
and the service of your creation.**

**We ask this through the same Christ Our Lord.  
Amen.**

