

# Welcome to All Saints Computing

These challenges have been set for you by Mr. Bishop who is the head of the Computing department.

---



You will need to do some internet research for these tasks.

Pre-learning\research...

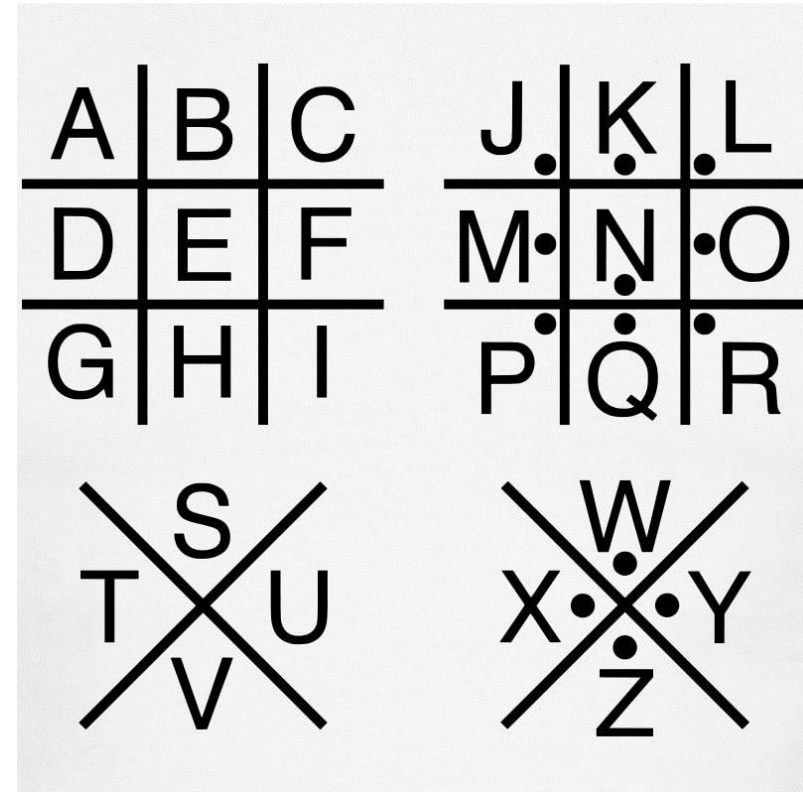
- Find out what an **Atbash** cipher is and how it works.
- Find out what a **Pigpen** cipher is and how it works.
- Find out what a **Caesar** cipher is and how it works.
- Find out what a **Rail** cipher is and how it works.

# Helpful Images 1

## Atbash Cipher

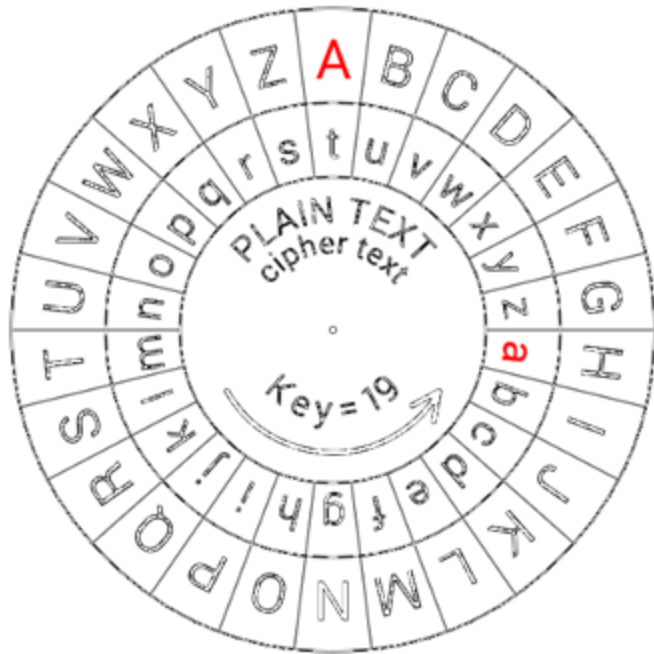
A = Z	N = M
B = Y	O = L
C = X	P = K
D = W	Q = J
E = V	R = I
F = U	S = H
G = T	T = G
H = S	U = F
I = R	V = E
J = Q	W = D
K = P	X = C
L = O	Y = B
M = N	Z = A

## Pigpen Cipher



# Helpful Images 2

## Caesar Cipher



## Rail Cipher

**Original Message:** Hello World

H			o			r		
	e		l			o		l
		l			W			d

**Encrypted Message:** Horel ollWd

Here is a fact about the Computing Department, but it has been encrypted using the Atbash Cipher

---

DV SZEVLFI OVHLMH RM GSV Y-YOLXP

Answer...



Here is a fact about the Computing Department, but it has been encrypted using the Pigpen Cipher

⌞	⌠	∨	∪	┐	└	└	┐	┘	⌞
∨	┐	∨	┘	└	∨	⌠	┘	└	⌠
⌞	┐	<	>	┐	⊠	┐	>	⊠	┘
└	┐	⊠	⌠						

Answer...

Here is a fact about the Computing Department, but it has been encrypted using the Caesar Cipher. (Key = 6)

---

SX H VXKLKXY DHUD ZU VRGEYZGZOUT

Answer...

Here is a fact about the Computing Department, but it has been encrypted using the Rail Cipher.

---

MWI EAR ILASHSAPTCTSLMA

(There are 2 spaces between I and E and 1 space between R and I)

Answer...

